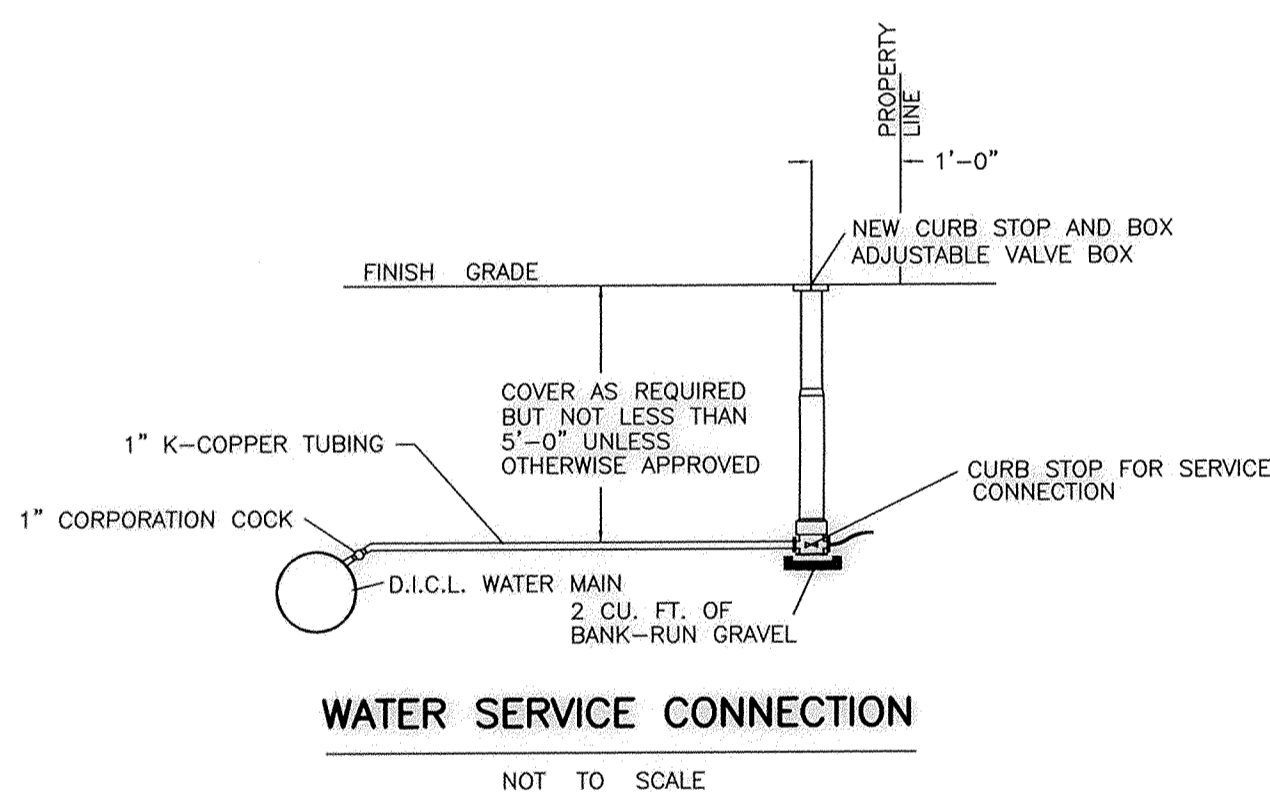


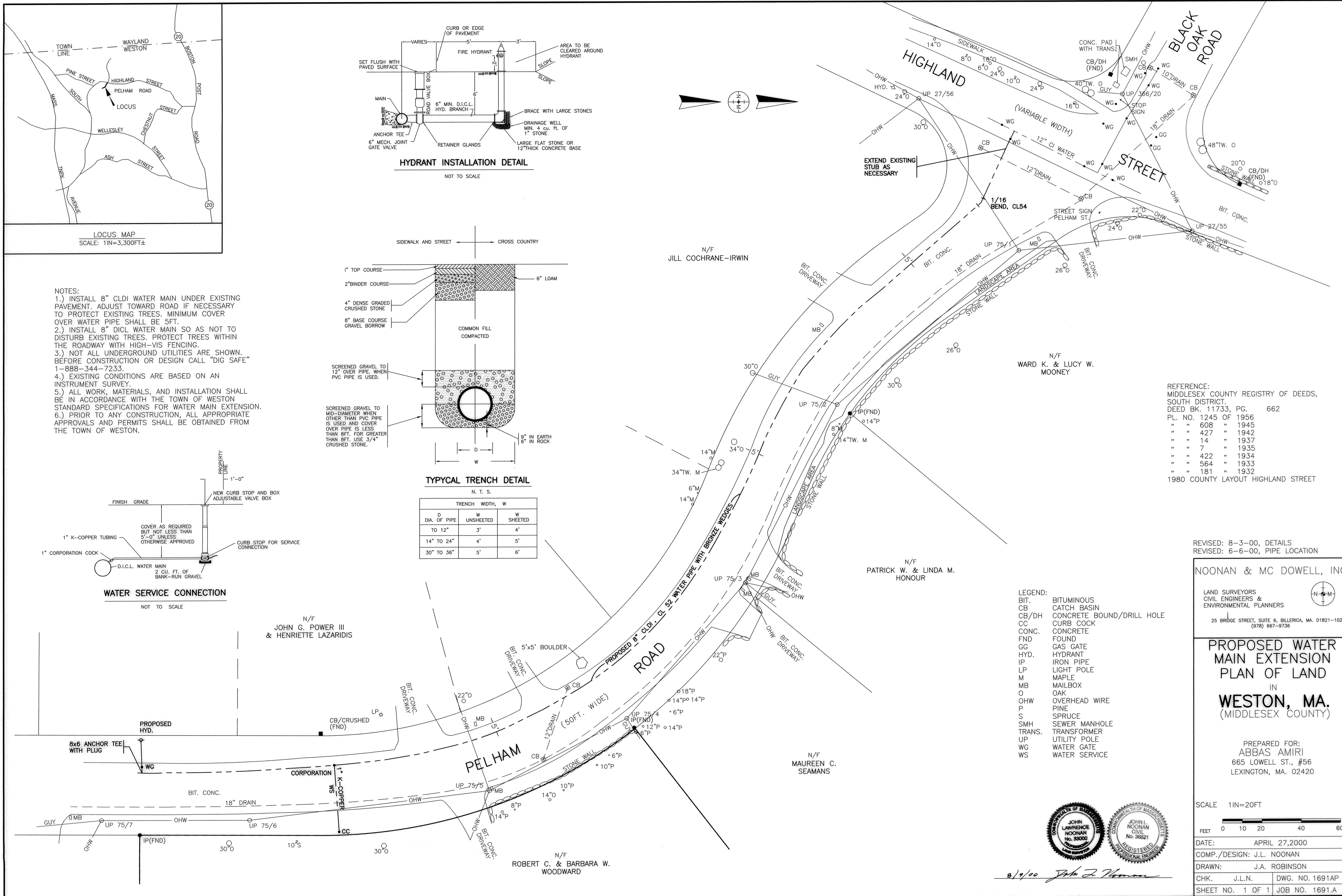
TYPICAL TRENCH DETAIL
N. T. S.

D DIA. OF PIPE TO 12"	TRENCH WIDTH, W	
	UNSHEETED	W SHEETED
14" TO 24"	4'	5'
30" TO 36"	5'	6'

- NOTES:
- 1.) INSTALL 8" CLDI WATER MAIN UNDER EXISTING PAVEMENT. ADJUST TOWARD ROAD IF NECESSARY TO PROTECT EXISTING TREES. MINIMUM COVER OVER WATER PIPE SHALL BE 5 FT.
 - 2.) INSTALL 8" DI CL WATER MAIN SO AS NOT TO DISTURB EXISTING TREES. PROTECT TREES WITHIN THE ROADWAY WITH HIGH-VIS FENCING.
 - 3.) NOT ALL UNDERGROUND UTILITIES ARE SHOWN. BEFORE CONSTRUCTION OR DESIGN CALL "DIG SAFE" 1-888-344-7233.
 - 4.) EXISTING CONDITIONS ARE BASED ON AN INSTRUMENT SURVEY.
 - 5.) ALL WORK, MATERIALS, AND INSTALLATION SHALL BE IN ACCORDANCE WITH THE TOWN OF WESTON STANDARD SPECIFICATIONS FOR WATER MAIN EXTENSION.
 - 6.) PRIOR TO ANY CONSTRUCTION, ALL APPROPRIATE APPROVALS AND PERMITS SHALL BE OBTAINED FROM THE TOWN OF WESTON.



WATER SERVICE CONNECTION
NOT TO SCALE



- REFERENCE:
MIDDLESEX COUNTY REGISTRY OF DEEDS,
SOUTH DISTRICT.
DEED BK. 11733, PG. 662
PL. NO. 1245 OF 1956
" " 608 " 1945
" " 427 " 1942
" " 14 " 1937
" " 7 " 1935
" " 422 " 1934
" " 564 " 1933
" " 181 " 1932
1980 COUNTY LAYOUT HIGHLAND STREET

REVISED: 8-3-00, DETAILS
REVISED: 6-6-00, PIPE LOCATION

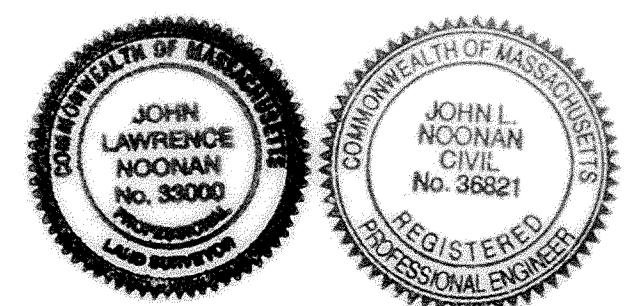
NOONAN & MC DOWELL, INC.
LAND SURVEYORS
CIVIL ENGINEERS &
ENVIRONMENTAL PLANNERS

25 BRIDGE STREET, SUITE 6, BILLERICA, MA. 01821-1023
(978) 667-9736

PROPOSED WATER MAIN EXTENSION
PLAN OF LAND
IN
WESTON, MA.
(MIDDLESEX COUNTY)

PREPARED FOR:
ABBAS AMIRI
665 LOWELL ST., #56
LEXINGTON, MA. 02420

- LEGEND:
- BIT. BITUMINOUS
 - CB CONCRETE BOUND/DRILL HOLE
 - CB/DH CONCRETE BOUND/DRILL HOLE
 - CC CURB COCK
 - CONC. CONCRETE
 - FND FOUND
 - GG GAS GATE
 - HYD. HYDRANT
 - IP IRON PIPE
 - LP LIGHT POLE
 - M MAPLE
 - MB MAILBOX
 - O OAK
 - OHW OVERHEAD WIRE
 - P PINE
 - S SPRUCE
 - SMH SEWER MANHOLE
 - TRANS. TRANSFORMER
 - UP UTILITY POLE
 - WG WATER GATE
 - WS WATER SERVICE



8/9/00 John J. Noonan

SCALE 1IN=20FT

DATE:	APRIL 27, 2000
COMP./DESIGN:	J.L. NOONAN
DRAWN:	J.A. ROBINSON
CHK.	J.L.N. DWG. NO. 1691AP
SHEET NO.	1 OF 1 JOB NO. 1691.A